

Political Cartoon #3
Title: Homeland Security

Overhead



Artist: Mike Keele, *The Denver Post*

Date: September, 2005

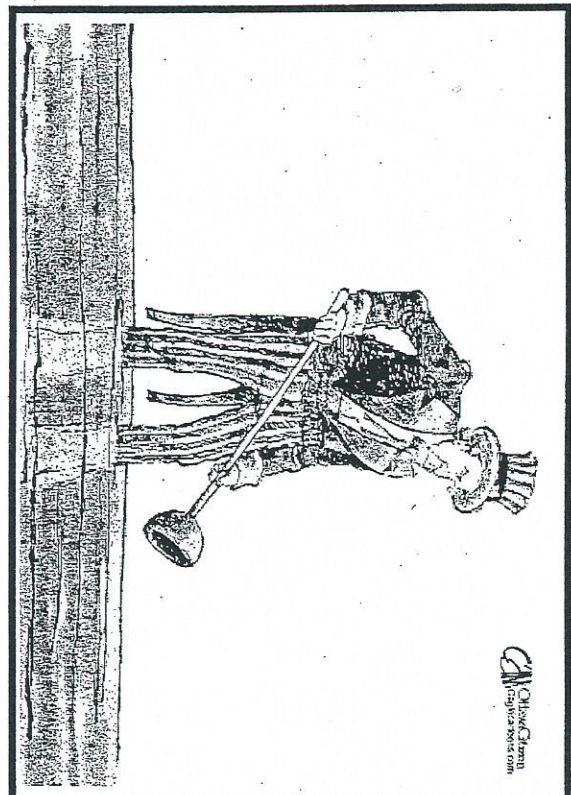
Source: <http://www.politicalcartoons.com/>

1. Describe what's going on in the political cartoon. (Who? What? When? Where?)
2. Identify any symbols (ex: an elephant to represent the Republican Party) portrayed in the cartoon and analyze what they represent.
3. What is the artist's message in the cartoon? What do you think is its purpose?
4. Do you agree or disagree with the cartoonist's message? Explain your answer.
5. What does this cartoon say about federalism and crisis management?

© Youth Leadership Initiative | www.youthleadership.net

Political Cartoon #4
Title: Cleanup

Overhead



Artist: Cam Cardow, *The Ottawa Citizen*

Date: September, 2005

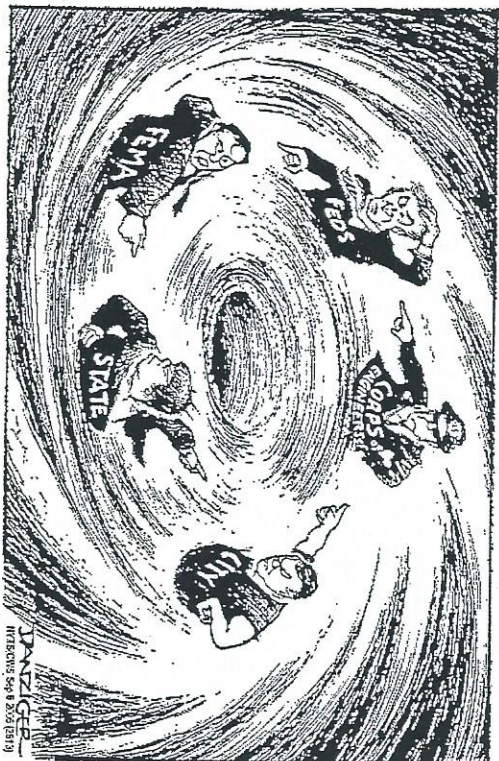
Source: <http://www.politicalcartoons.com/>

1. Describe what's going on in the political cartoon. (Who? What? When? Where?)
2. Identify any symbols (ex: an elephant to represent the Republican Party) portrayed in the cartoon and analyze what they represent.
3. What is the artist's message in the cartoon? What do you think is its purpose?
4. Do you agree or disagree with the cartoonist's message? Explain your answer.
5. What does this cartoon say about federalism and crisis management?

© Youth Leadership Initiative | www.youthleadership.net

Political Cartoon #1
 Title: *Another Perfect Storm*

Overhead



Artist: Jeff Danziger
 Date: September 6, 2005
 Source: <http://cartoonbox.state.com/>

1. Describe what's going on in the political cartoon. (Who? What? Where?)
2. Identify any symbols (ex: an elephant to represent the Republican Party) portrayed in the cartoon and analyze what they represent.
3. What is the artist's message in the cartoon? What do you think is its purpose?
4. Do you agree or disagree with the cartoonist's message? Explain your answer.
5. What does this cartoon say about federalism and crisis management?

© Youth Leadership Initiative | www.youthleadership.net

Political Cartoon #2
 Title: *Disaster Response*

Overhead



Artist: John Trever, *The Albuquerque Journal*
 Date: September, 2005
 Source: <http://www.politicalcartoons.com/>

1. Describe what's going on in the political cartoon. (Who? What? Where?)
2. Identify any symbols (ex: an elephant to represent the Republican Party) portrayed in the cartoon and analyze what they represent.
3. What is the artist's message in the cartoon? What do you think is its purpose?
4. Do you agree or disagree with the cartoonist's message? Explain your answer.
5. What does this cartoon say about federalism and crisis management?

© Youth Leadership Initiative | www.youthleadership.net